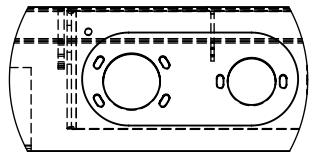
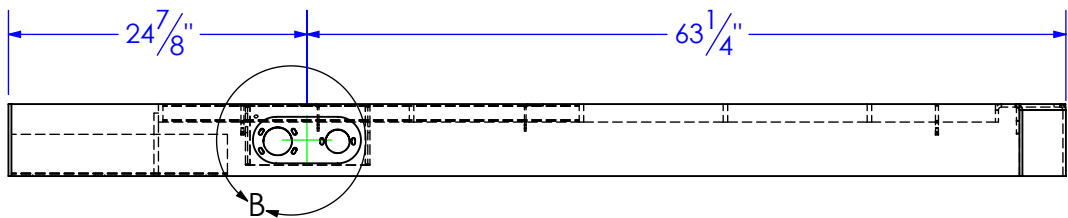
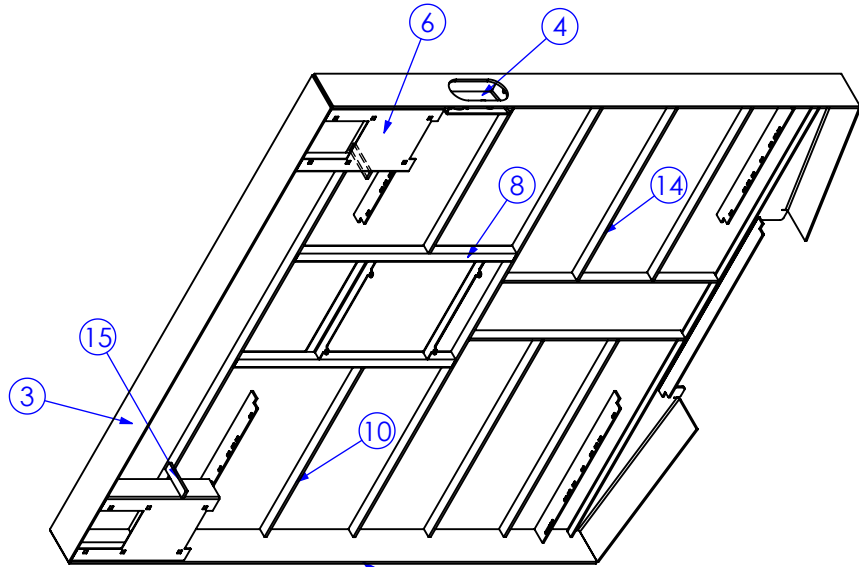
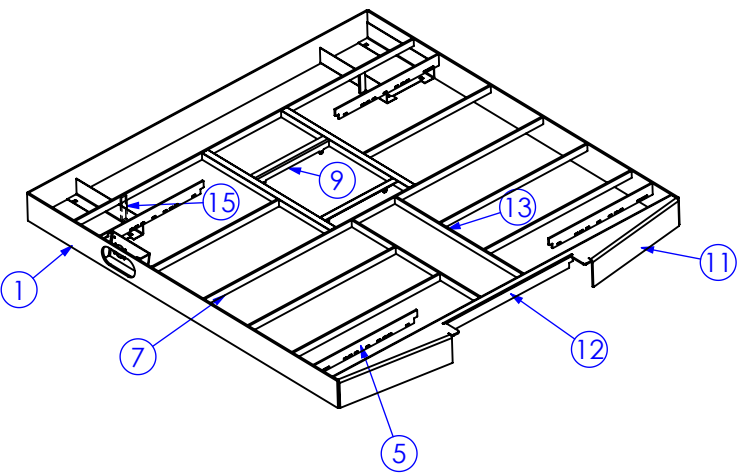
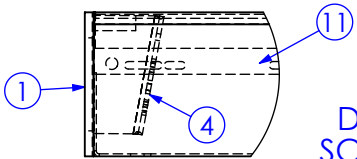


ITEM NO.	PART NUMBER	DESCRIPTION	MATERIAL	DRAWING #	QTY.
1	FP-APPS-100 BSD	APPS 100 BED SIDE DRIVERS	3/8" HRS	15-2207	1
2	FI .375 X 6 L 84	LENGTH: 84"	FI 3/8x6	STOCK	1
3	FI .25 X 6 L 83.625	LENGTH:83-5/8"	FI 1/2x6	STOCK	1
4	FP-SPK-403 C	DOUBLE FUEL FILLER BRACKET, SPIKE BED	7ga HRS	15-2226	1
5	FP-MF-PS 100	MUD FLAP PRO SPEAR, 100 SERIES	1/4" HRS	16-2101	4
6	FP-SPK-406 cut 18 for 100 series	TOOL BOX BRACKET, PRO SPEAR	12ga HRS	15-2206	2
7	FI .375 X 1.5 L 83.4375	LENGTH: 83-7/16"	FI 3/8" x 1-1/2"	STOCK	2
8	ST 1.5 x .120 L 34.6875	LENGTH: 34-11/16"	ST-1-1/2 x .120	STOCK	2
9	FP-DGN-105	DOOR GOOSENECK TAB ANGLE	10ga HRS.	11-2244	2
10	FI .375 X 1.5 L 31.125	LENGTH: 31-1/8"	FI 3/8" x 1-1/2"	STOCK	2
11	FP-PS-BBR-100	BACK BROKE RAIL, PRO SPEAR 100 SERIES	1/4" HRS	16-2201	1
12	FP-PS-BBRFP	BACK BROKE RAIL, FILLER PLATE, PRO SPEAR	1/4" HRS	16-2202	1
13	FI .375 X 1.5 L 34.3125	LENGTH: 34-5/16"	FI 3/8" x 1-1/2"	STOCK	2
14	FI .375 X 1.5 L 36.125	LENGTH: 36-1/8"	FI 3/8" X 1-1/2"	STOCK	4
15	FI .375 X 1.25 L 5.25	SAFETY CHAIN HOLDER LENGTH: 5-1/4"	3/8" HRS.	STOCK	2



DETAIL B
SCALE 1 : 8



DETAIL A
SCALE 1 : 8

PROPRIETARY AND CONFIDENTIAL
THE INFORMATION CONTAINED IN THIS
DRAWING IS THE SOLE PROPERTY OF TRIPLE
C INC. ANY REPRODUCTION IN PART OR
AS A WHOLE WITHOUT THE WRITTEN
PERMISSION OF TRIPLE C, INC IS PROHIBITED.

UNLESS OTHERWISE SPECIFIED:
DIMENSIONS ARE IN INCHES
TOLERANCES:
FRACTIONAL $\pm 1/16$
ANGULAR: MACH ± 1 BEND \pm
TWO PLACE DECIMAL $\pm .010$
THREE PLACE DECIMAL $\pm .005$
MATERIAL
DO NOT SCALE DRAWING

	NAME	DATE
DRAWN	ETHAN	8/3/2017
PART #	SUB-FF-PSD100	
ASM #	Asm #	
COMMENTS:		
FLOOR FRAME PRO SPEAR 100, WLDMNT		

P.O. BOX 248, SABETHA, KS 66534
(785) 284-3674 FAX (785) 284-3931

TRIPLE C
INC

SIZE	DWG. NO.	REV
B	16-1220	C
SCALE: 1:16	WEIGHT: 315.14	SHEET 1 OF 1

REVISIONS			
REV.	DESCRIPTION	DATE	APPROVED
A	INITIAL RELEASE	4/3/2017	
B	REVISED TO USE FLAT BAR AND ADDED BACK BROKE RAIL	4/3/2017	
C	ADD ITEM 15	8/3/2017	